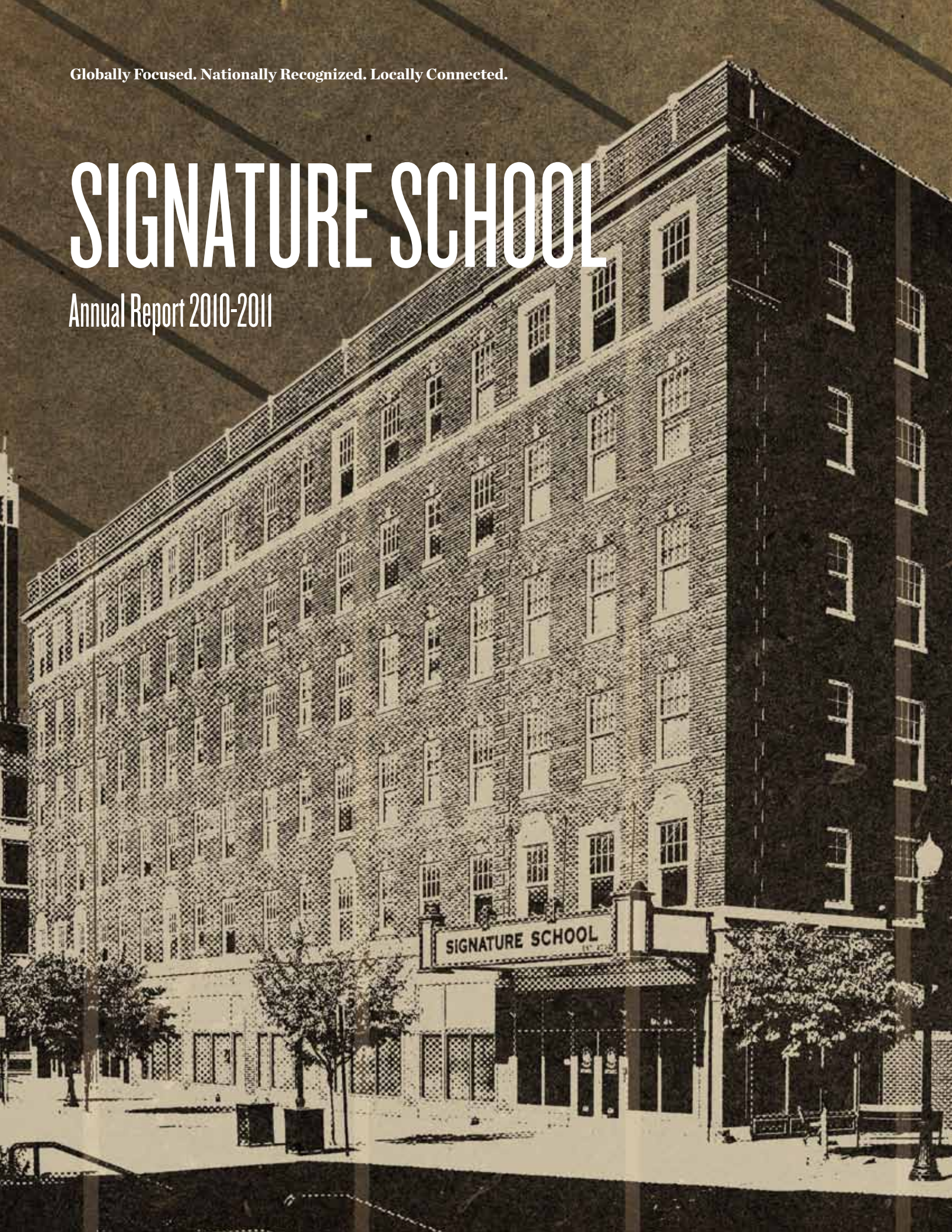


Globally Focused. Nationally Recognized. Locally Connected.

# SIGNATURE SCHOOL

Annual Report 2010-2011



Sustaining the vision.

Maintaining the relationships.



Cover & inside spread photos by Gray Photography.

October 2011

It is with pride, enthusiasm, and sadness that I submit my last Signature School Annual Report to the Signature community and public. This year Signature celebrates its Tenth Anniversary, and it has been an extraordinary decade. I am very proud of the school that we have all created together--students, teachers, parents, the Signature Board of Directors, the Signature School Foundation, and the Evansville business community.

In the following pages you will be able to see that, once again, Signature students and teachers have excelled. The recognition, awards, and accomplishments the school has received in its short history are unmatched. I want to especially recognize Bob Koch, Ed Hafer, John Whinrey, Rick Geissinger, John C. Schroeder, Ron Romain, Bob Jones, Rita Eykamp, Ed and Mary Anne Fox, Susan Parsons, and Jeanie Brubeck. It has been my pleasure to work with these outstanding leaders in our community. I could not have done my job without their advice, insights, and support. They are remarkable individuals.

I recall that when Signature opened in 2002 someone said to me "This school is an eagle in a cage. It will never fly." We did fly. Our results speak for themselves. The 2010-2011 Signature School Annual Report provides an overview of our school's curriculum, programs, and finances. As you read this report, you will also see the accomplishments of the past decade in which Signature has continued to consistently perform well above the state and national averages in all measurable areas.

In closing, I want to especially express my admiration and gratitude for the Signature teachers and staff. Students and parents choose to attend Signature School because of the excellent teachers. Signature's success is the result of the love, passion, and commitment on the part of these extraordinary educators.

I encourage you to read this 2010-2011 Signature School Annual Report with a discerning eye and to provide comments or suggestions as we strive to provide the best education possible for students who choose to attend our school. Signature is stronger than ever, and I know that the next decade will be even better. It has been an honor for me to be a part of this amazing school. In the words of Winston Churchill, "I am easily satisfied with the very best."

Sincerely,

**Vicki Snyder**  
*Executive Director/Principal*

I. Signature at a Glance .....	4
II. Educational Design and Program of Studies .....	5
III. Results in External Assessment .....	6
External Assessment: ISTEP+ .....	6
External Assessment: SAT and ACT .....	7
External Assessment: Advanced Placement .....	8
External Assessment: International Baccalaureate Programme .....	11
Comparative Assessment AP/IB.....	15
IV. Student Profile .....	16
Student Community Service .....	16
Graduate Profile .....	17
Student Recognition .....	18
V. Faculty Recognition .....	20
VI. Signature School Recognition .....	20
VII. Financial Data .....	21
VIII. Signature Staff .....	22
IV. History .....	23
X. Thank You .....	24

---

Signature School does not discriminate against any individual on the basis of race, color, religion, gender, sexual orientation, veteran status, national origin, age, disability or limited English proficiency in its programs, or employment policies as required by the Indiana Civil Rights Laws (I.C. 2-9-1), Title IV and VI (Civil Rights Act of 1964), the Equal Pay Act of 1973, Title IX (Educational Amendments), and Section 504 (Rehabilitation Act of 1973).

## TABLE OF CONTENTS

## Results

**Signature Awards/Recognition**

- Ranked #1 in Midwest by *The Washington Post*
- Ranked #3 among nation's charter schools by *The Washington Post*
- Ranked #7 by *Newsweek* magazine (June 2011)
- Ranked #8 by *The Washington Post*
- Four Star Award 2009 (presented in 2010)
- Adequate Yearly Progress (*No Child Left Behind*)
- Categorized as Exemplary (*Indiana Public Law 221*)
- Ranked first in State for Access & Pass Rate for AP/IB Performance 2011 – Signature's pass rate was 88%

## Scholarship

**End of Course Assessments:**

**(100%)** Algebra I | **(100%)** English 10 | **(96%)** Biology I

**Participation in advanced classes:**

**100%** of students are enrolled in advanced college preparatory classes

**International Baccalaureate Diploma Programme**

- **271** exams administered (*this figure excludes TOK and Extended Essay*)
- **74** registered certificate candidates
- **38** full diploma candidates
- **31** full diploma recipients (82%)

**Participation in Advanced Placement**

- Number of AP exams administered: **524** (2008-**229**, 2009-**442**, 2010-**497**)
- Number of students taking AP exams: **198** (2008-**121**, 2009-**170**, 2010-**182**)
- **66%** scored **3 or above** on AP exams (*grade 10-68%, grade 11-69%, grade 12-59%*)

## Scholars

- **Opening enrollment:** 326 students
- **Number of teachers:** 23 full-time and 3 part-time
- **Average class size:** 20
- **Participation in the community:** 10,546 service hours
- **Average daily attendance rate:** 96%
- **2011 Graduation rate:** 100% (*Net worth of 2011 grants & scholarships: \$797 million*)
- **Academic Honors Diploma granted:** 90%
- **Five National Merit Finalists:** Evan Brizius, Neel Erikson, James Hitchcock, Kaleen O'Connell, Caleb Rouleau

## SAT

	Signature Seniors	Indiana	National
<b>Average critical reading</b>	607	493	497
<b>Average math</b>	605	501	514
<b>Writing</b>	599	475	489
<b>Composite (Math/Reading)</b>	1212	994	1011

(Data in this report are for high school graduates in the year 2011. For students who tested more than once, their best score is included in this average.)

## Curriculum

**Indiana Academic Honors**

The State of Indiana awards an Honors Diploma designation to students who have earned 47 credits, who have a GPA of 3.0 or and who have received no grade below a "C" in required courses. Specific English, social studies, math, and science courses are required. Additional world language and fine arts must be completed.

**Signature Requirements**

In addition to the requirements of the Academic Honors Diploma, Signature School requirements for graduation include Global Awareness, Multi-Cultural America, four years of World Languages, and 100 hours of community service.

**International Baccalaureate Diploma Programme (IB)**

The IB Diploma Programme is a challenging two-year program of study offered to juniors and seniors. The curriculum consists of choices from six subject groups, and at its core are requirements for an extended essay, theory of knowledge coursework, and

CAS (creativity, action, and service). To receive an IB diploma, students take written examinations which are marked by external IB examiners and earn at least 24 points.

**Advanced Placement**

The Advanced Placement program offers students college-level credit and advanced standing at most of the nation's colleges and universities. At the end of the course, students take an exam which is scored on a 5-point scale. A student may earn college credit with a score of 3 or above.

**College Credit**

Students may earn college credit through the following universities:

- **Indiana University** (*Advanced College Project, Students may receive ACP in Global Awareness and German*)
- **University of Southern Indiana** (*College Achievement Program and campus courses*)
- **University of Evansville** (*bridge credit and campus courses*)

## Program Of Studies 2010-2011

Curriculum Area	Grade 9	Grade 10	Grade 11	Grade 12
<b>Group 1: English</b>	US Lit & Composition	World Lit. & Composition	HL English 1 AP Language	HL English 2 AP Literature
<b>Group 2: Second Language</b>	French 1 or 2 German 1 or 2 Spanish 1 or 2	French 2 or 3 German 2 or 3 Spanish 2 or 3	SL French 1 SL German 1 SL Spanish 1	SL French 2 SL German 2/AP German/ACP German (IU credit) SL Spanish 2/AP Spanish
<b>Group 3: Individuals &amp; Societies</b>	US History	AP World History	HL European History 1	HL European History 2 (AP Comparative Politics)
<b>Group 4: Experimental Sciences</b>	Biology Physics 9	Chemistry HL	Biology 1 HL SL Chemistry 1 (AP Chem) AP Env Sci Physics/AP Physics	Biology 2 SL Chemistry 2
<b>Group 5: Mathematics</b>	Algebra 1 Geometry H	Geometry H Algebra 2/Trig	Pre-IB Algebra 2 AP Calc AB	Math Studies SL AP Calc BC and Math SL
<b>Group 6: The Arts or Elective</b>	Fine Arts Connections	Music Elective (see below) Visual Art 1 or 2	SL Music 1 AP Art 2D/3D or AP Art Drawing IB Theatre SL	SL Music 2
<b>Theory of Knowledge (Diploma Candidates only)</b>			Theory of Knowledge (50 hours)	Theory of Knowledge (50 hours)
<b>Other Grad. Requirements</b>	P.E. (2 sems)	Health (1 sem) Multi-Cultural America (1 sem)	U.S Government (1 sem)	
<b>Other Electives Offered</b>	Instrumental Music, Yearbook, Piano Lab, Signature Singers, Psychology, and Sociology			

# RESULTS IN EXTERNAL ASSESSMENT



## State \_\_\_\_\_

### Indiana Statewide Testing for Educational Progress Plus (ISTEP+) End-of-Course Assessments (ECA)

The purpose of the Indiana Statewide Testing for Educational Progress Plus (ISTEP+) program is to measure student achievement in the subject areas of English/Language Arts, Science, and Mathematics. In particular, ISTEP+ reports student achievement levels according to the Indiana Academic Standards that were adopted in November 2000 by the Indiana State Board of Education. The ISTEP+ End-of-Course Assessments (ECAs) are criterion-referenced assessments developed specifically for students completing their instruction in Algebra I, Biology I, or English 10. In order to receive an Indiana diploma, students must pass the ECA in Algebra I and English 10. The exams were administered in the spring for Algebra I, English 10, and Biology.

#### 2010-2011 ISTEP+ECA Results

Subject	Algebra I	English 10	Biology I
% Pass	100%	100%	96%

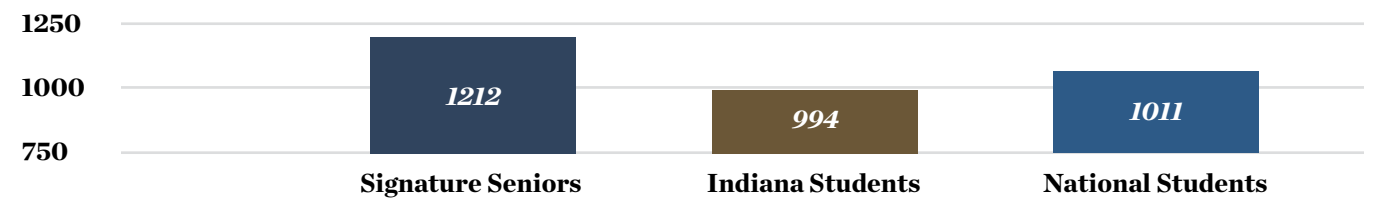
## National \_\_\_\_\_

### Scholastic Aptitude Test (SAT)

Test Category	Signature Seniors (47 tested)	Indiana	National
Average Critical	607	493	497
Average Math	605	501	514
Writing	599	475	489

Data in this report are for high school graduates in the year 2011. For students who tested more than once, their best score is included in this average.

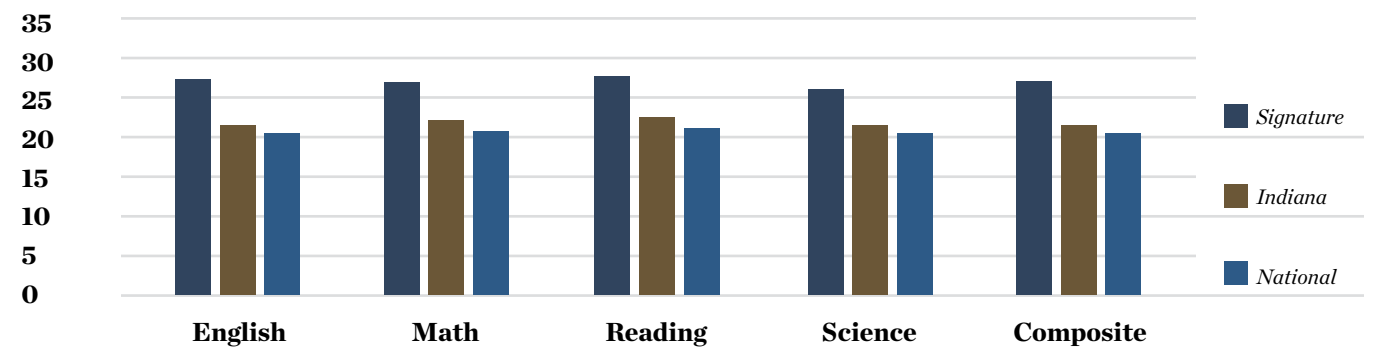
#### Comparison\* of Senior Composite SAT Scores (Math and Critical Reading Only)



### American College Test (ACT)

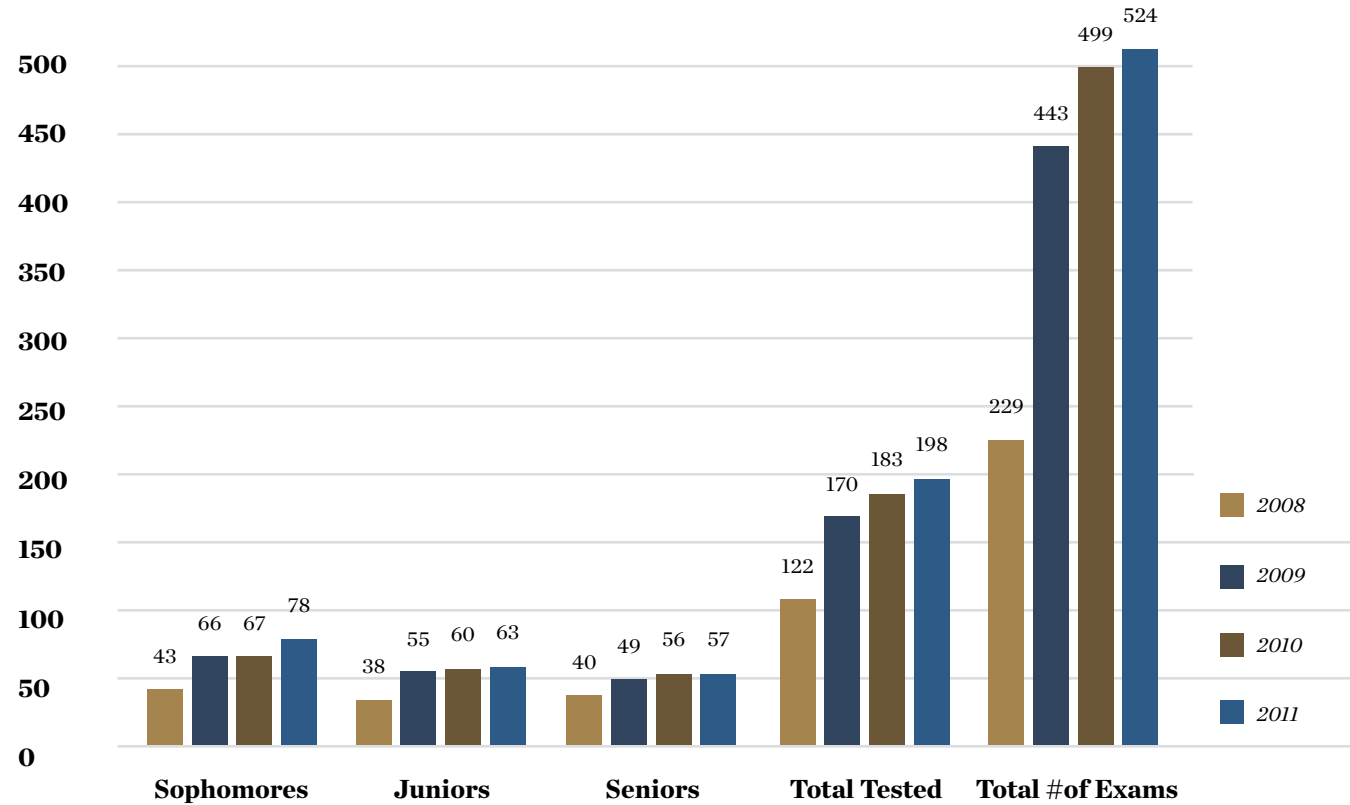
Test Category	Signature Seniors (50 tested)	Indiana	National
English	27.6	21.7	20.5
Mathematics	27.1	22.4	21.0
Reading Comp.	27.4	22.6	21.3
Science Reasoning	25.8	21.9	20.9
Composite	27.2	22.3	21.0

#### Comparison\* of Senior Composite ACT Scores (Math and Critical Reading Only)



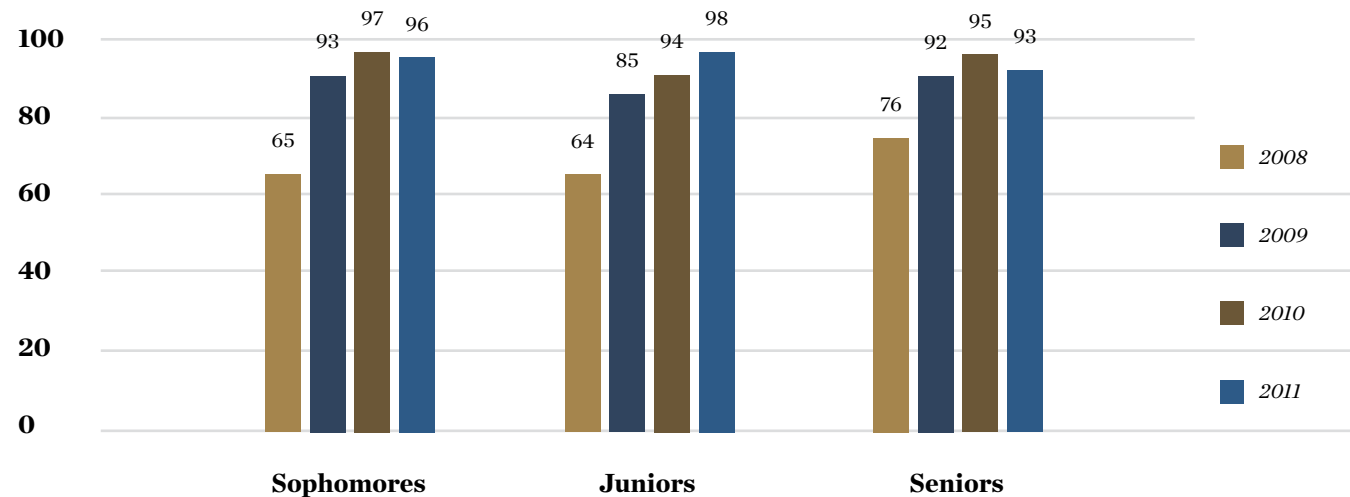
### Advanced Placement Exam Results

In May 2011, 198 Signature students sat for 524 Advanced Placement (AP) exams. The following chart summarizes the growth of participation since 2008. It is worth noting that Signature was ranked 27th in *Newsweek's* Top 100 High Schools list in 2008 and 7th in 2010. Signature also broke another top 10 list when *The Washington Post* ranked Signature the 8th best high school in the nation.



### Percentage Participating in AP Testing in May 2011

The following chart shows why the rate of increase in participation is leveling off. Most Signature sophomores, juniors, and seniors take an AP exam. It should be noted that the four seniors who did not participate in AP testing in 2011 were all IB Diploma candidates who took five or more IB exams.

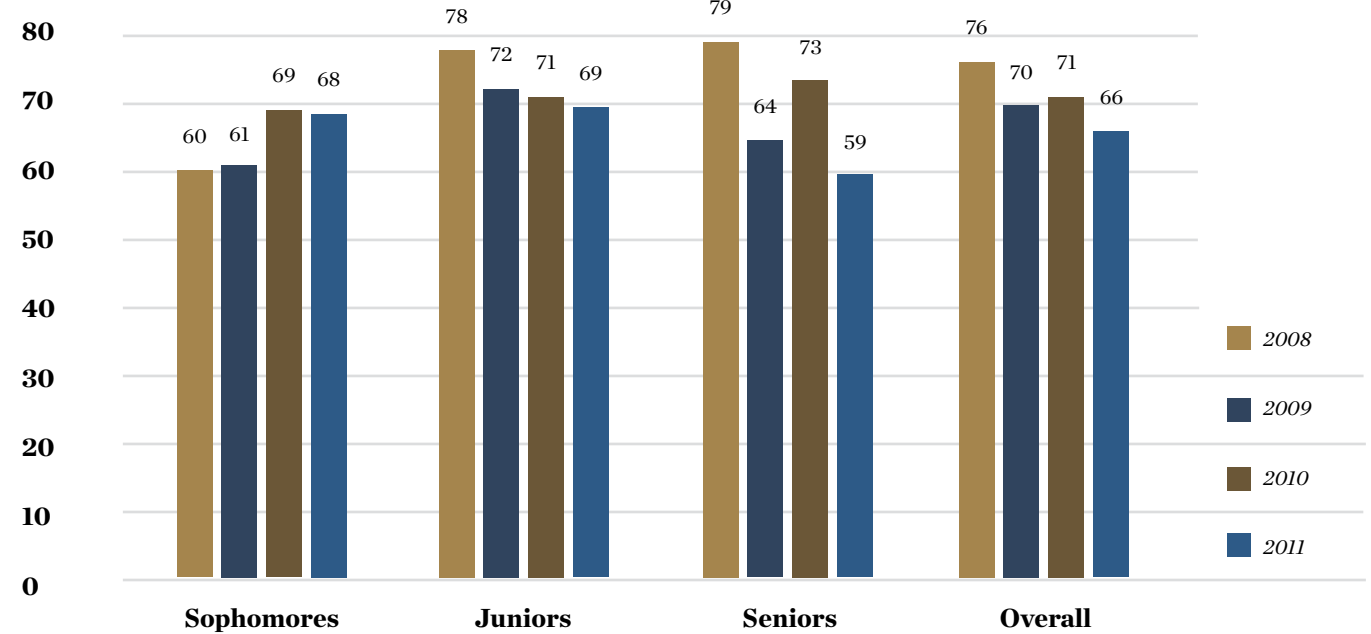


### Pass Rate Comparison by Class

Each AP exam grade is a weighted combination of the student's score on the multiple-choice section and on the free-response section of the exam. The final grade is reported on a 5-point scale:

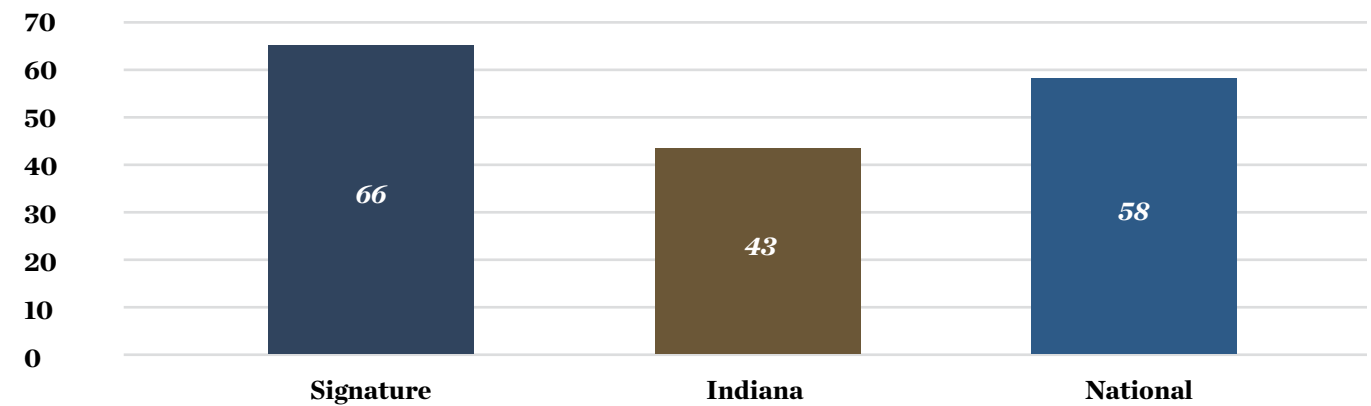
**(5)** extremely well qualified | **(4)** well qualified | **(3)** qualified | **(2)** possibly qualified | **(1)** no recommendation

The following chart depicts the percentage of AP exams scoring a 3 or higher by class and by year.



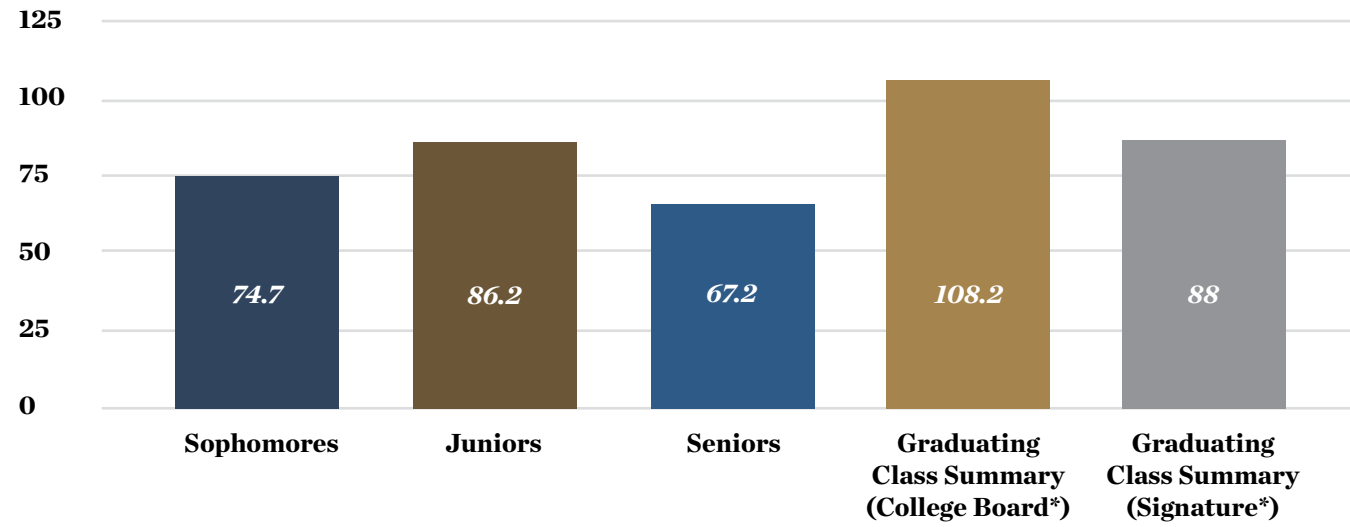
### Percentage of Scores 3 or Higher

Signature students, in many instances, fared better than their peers in Indiana and in the nation. The chart below compares Signature School's overall pass rate with state and national pass rates from 2010, the latest available data.



In June, 2010, Indiana announced a new metric, "Access and Success," for evaluating high school performance. The metric is based on AP's Equity and Excellence Graduating Class Summary score, defined as the number of seniors who have scored a 3 or higher on at least one AP exam, taken at anytime during their high school career, divided by the number of seniors in the class. Signature ranked first in the state with its 2009 Equity and Excellence score of 75.5% and achieved the same rank in 2010 with an even higher score of 88.1%. The chart below gives Signature's 2011 Equity and Excellence Graduating Class Summary score as well as the Equity and Excellence scores for each class, defined as the percentage of students in each class passing at least one AP exam. The last bar shows Signature's likely Access and Success score for 2011.

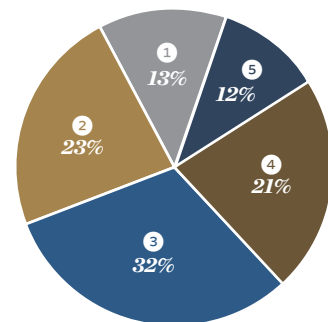
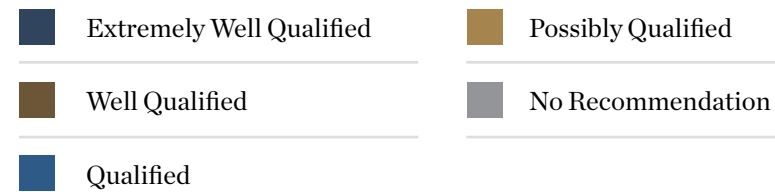
### Equity and Excellence



\* The College Board projects its Graduating Class Summary score while Signature School provides a real count, the method used by Indiana to determine its Access and Success score.

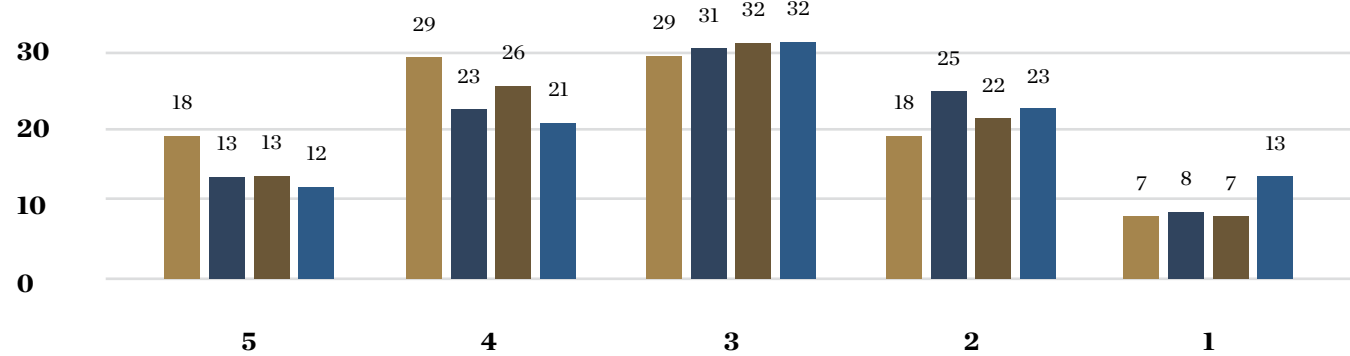
### Distribution of Signature School AP Scores

The following chart shows the distribution of scores for the 2011 testing session.



### Percent Distribution of AP Scores

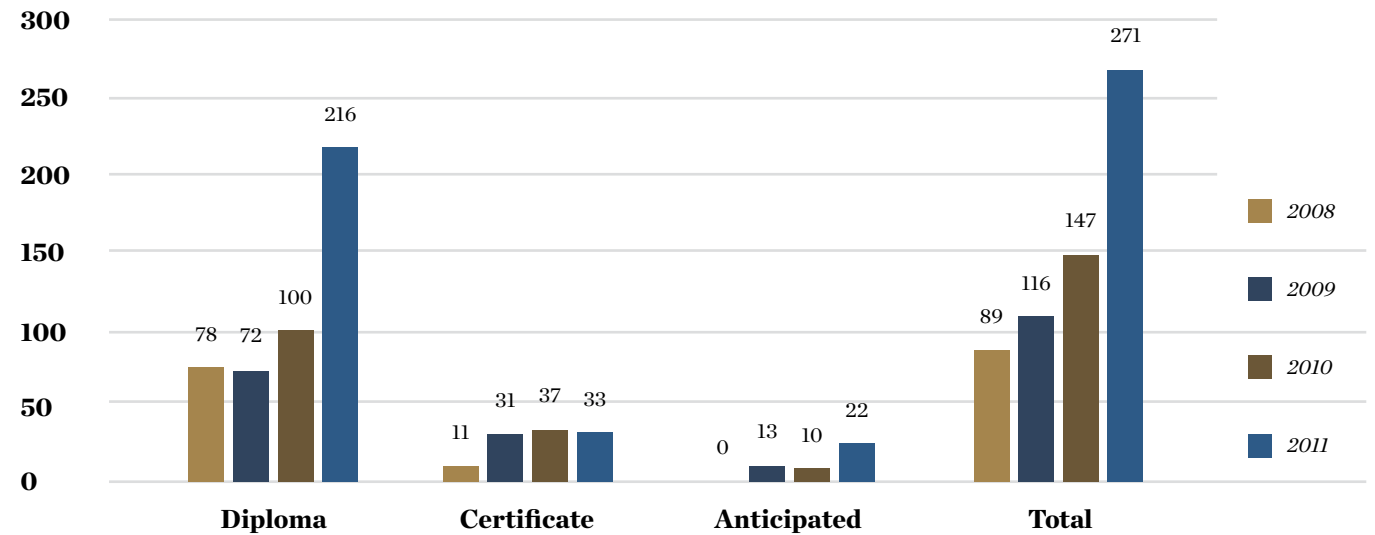
The chart of AP score distributions since 2008 is provided so that the 2011 grade distribution may be seen in its historical context.



The table above gives a more detailed analysis of Signature student performance as compared to that of students across Indiana and the nation. The tables gives details of the score distribution and also shows the percentage of Signature students enrolled in AP or IB classes who participate in these external assessments.

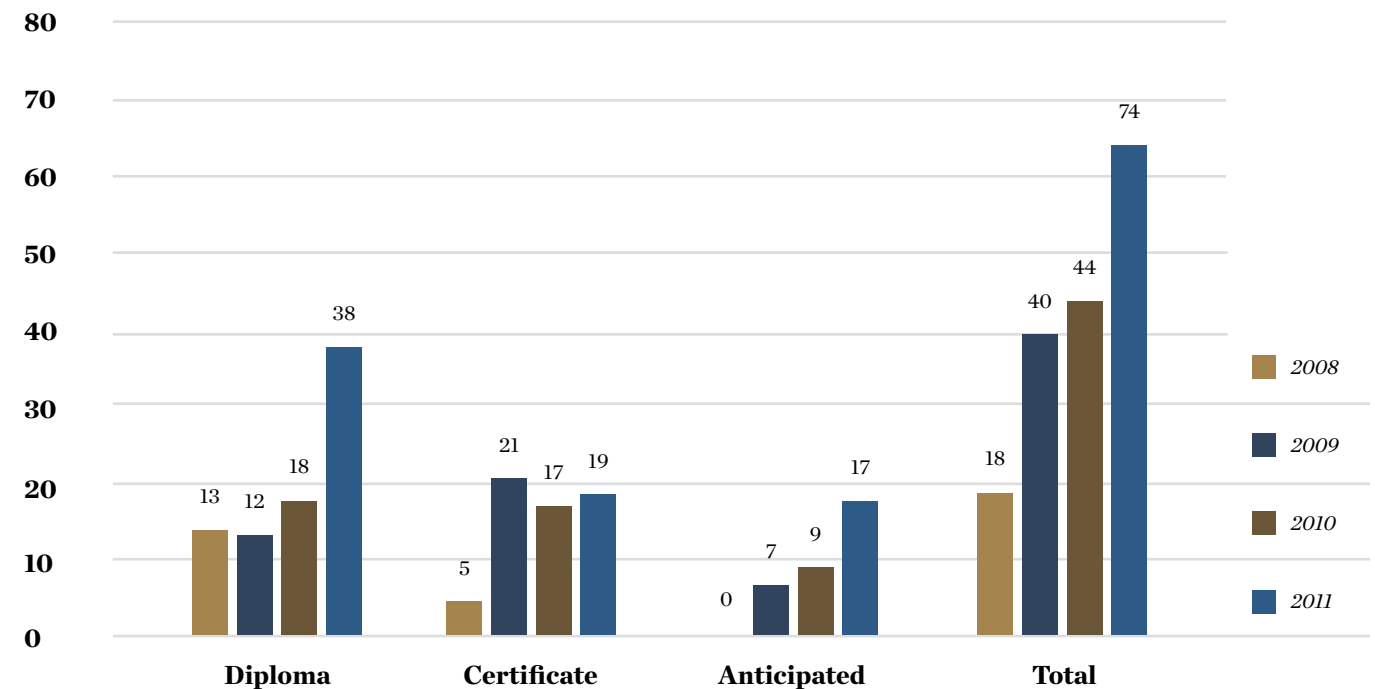
### Number of IB Exams Taken

Participation in the IB program is not limited to diploma candidates. Seniors and juniors may take IB exams as certificate candidates, and juniors may also take IB exams as anticipated candidates, students who intend to complete the IB Diploma requirements as seniors. The chart below depicts the growth in exam numbers taken by students at all three levels of IB program participation: diploma, certificate, and anticipated.



### Number of Participants in IB Testing

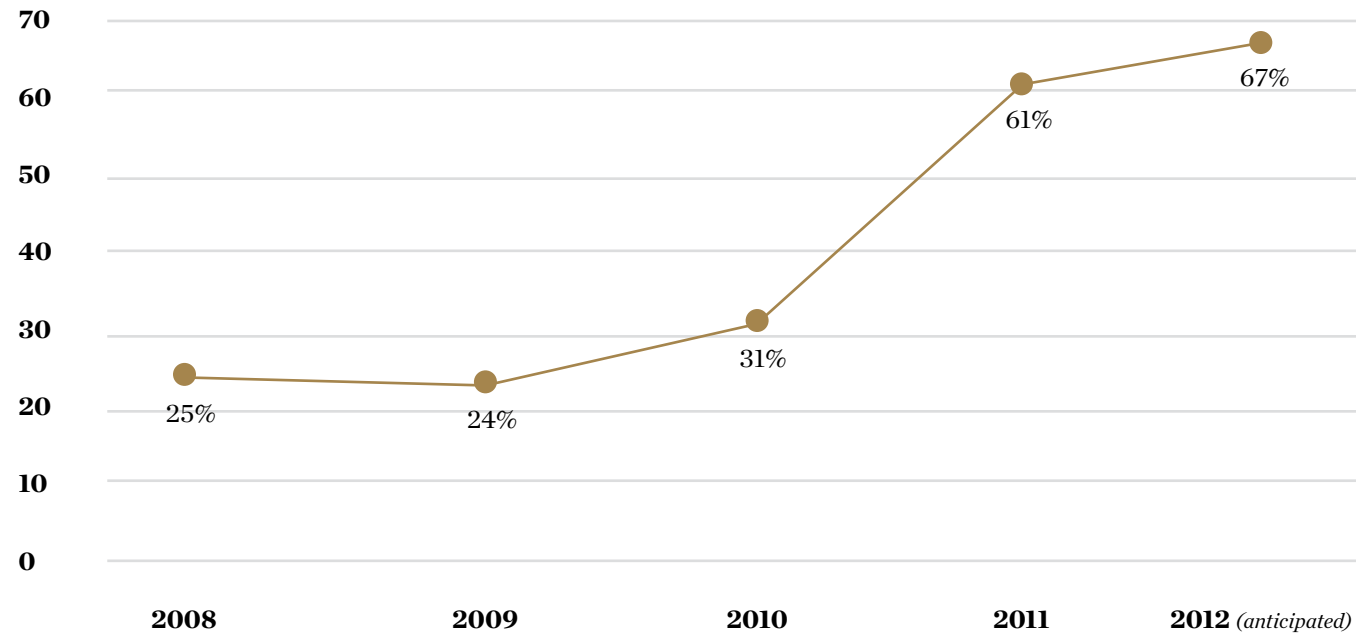
To facilitate understanding the level of student participation in the IB program, the following chart depicts the increasing number of students involved.



## Summary of Results from the International Baccalaureate Session in May 2010

The IB Diploma program has expanded along with the AP program. The chart below tracks the percentage of seniors participating as IB diploma candidates. It is worth noting that participation seems to be leveling out. Juniors have elected to begin the 2011-2012 school year as diploma candidates at the steady rate of 68%.

### Percentage of Senior IB Diploma Candidates



IB Diplomas are awarded based on a student's performance in six subject-area external and internal assessments and satisfactory completion of a 4000 word extended essay (EE), a Theory of Knowledge (TOK) course, and 150 hours of Creativity, Action, Service (CAS). The following table shows Signature's IB Diploma award rate as well as the 2010's worldwide rate provided to give a basis of comparison. Over time, the worldwide rate has not fluctuated far beyond 80%.

	Diploma Candidates	Diplomas Awarded	Diploma Award Rate
Signature School 2008	13	10	77%
Signature School 2009	12	10	83%
Signature School 2010	18	13	72%
Signature School 2011	38	31	82%
Worldwide: May, 2010	48,615	37,920	78%

The highest grade a student can achieve in any subject area is seven. Diploma candidates take six exams for a total possible 42 points. Three more points may be awarded according to a matrix composed of the Theory of Knowledge (TOK) and extended essay (EE) components. Diploma recipients are students who perform satisfactory across all subject areas, complete CAS hours, and achieve at least 45 points.

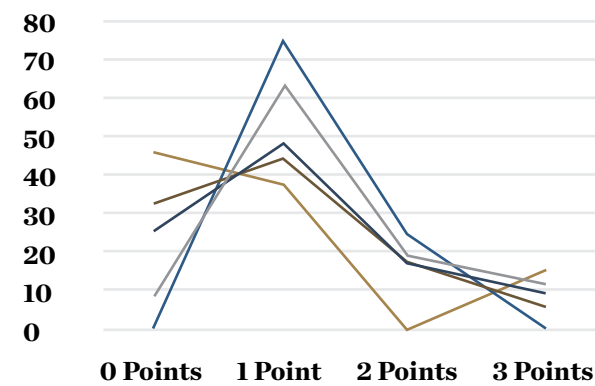
## TOK and the Extended Essay Assessment

(A) Excellent | (B) Good | (C) Satisfactory | (D) Mediocre | (E) Elementary | (N) No Grade

These grades combine according to the matrix at the right to give students a possible maximum of 3 additional points. Bonus points have been a point of emphasis among the IB team, and this year's results show that they need to remain so. The chart below compares Signature's bonus point distribution over the last three years with the world-wide point distribution in May 2010, the latest available data.

		Theory of Knowledge				
		A	B	C	D	E
Extended Essay	A	+3	+3	+2	+2	+1
	B	+3	+2	+1	+1	0
	C	+2	+1	+1	0	0
	D	+2	+1	0	0	0
	E	+1	0	0	0	0

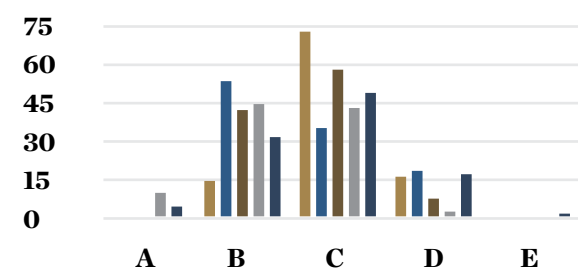
### Distribution of Bonus Points



	0 Points	1 Point	2 Points	3 Points
Sig. 2008	46%	38%	0%	15%
Sig. 2009	0%	75%	25%	0%
Sig. 2010	33%	44%	17%	6%
Sig. 2011	8%	63%	18%	11%
World 2010	25%	48%	17%	9%

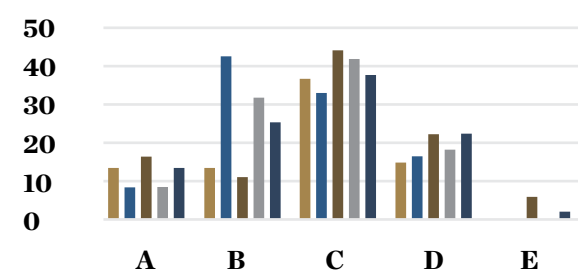
The following two charts show the grade distribution for the Extended Essay and for TOK over the last four years compared to the world-wide point distributions of these subjects in May 2010, the latest available data.

### TOK Grade Distribution



	A	B	C	D	E
Sig. 2008	0%	15%	69%	15%	0%
Sig. 2009	0%	50%	33%	17%	0%
Sig. 2010	0%	39%	55%	6%	0%
Sig. 2011	11%	45%	42%	2%	0%
World 2010	5%	31%	47%	16%	1%

### Extended Essay Grade Distribution



	A	B	C	D	E
Sig. 2008	15%	15%	38%	15%	0%
Sig. 2009	8%	42%	33%	17%	0%
Sig. 2010	17%	11%	44%	22%	6%
Sig. 2011	8%	32%	42%	18%	0%
World 2010	14%	25%	37%	22%	2%



### International Baccalaureate Exam Results & Comparison of Mean Subject Scores

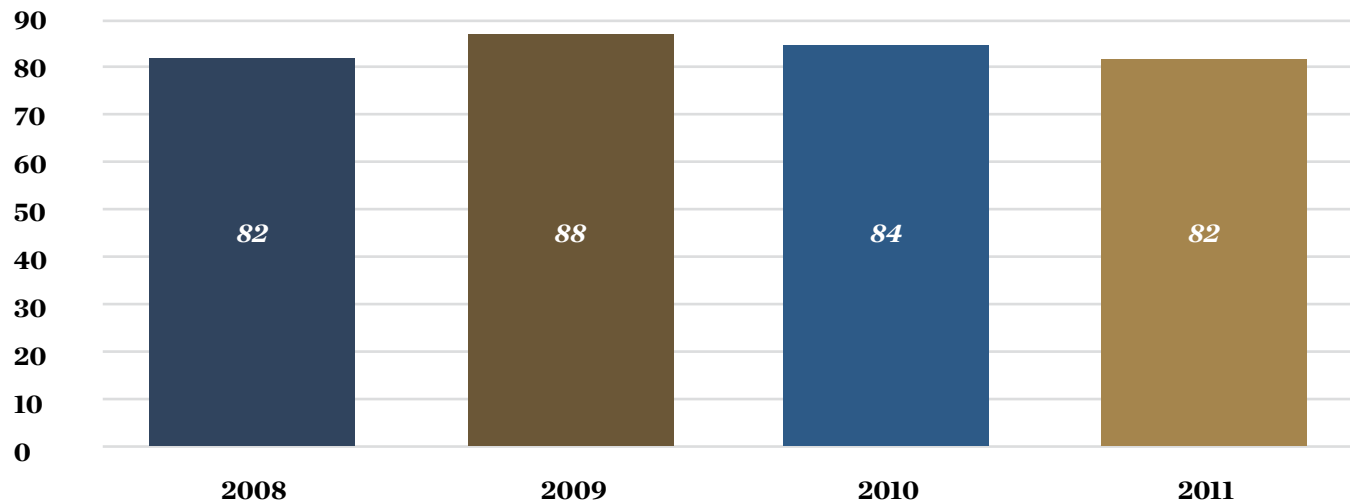
The following table shows the breakdown of scores Signature students earned during the May 2011 IB testing session. The IB exams are assessed on a 7.0 scale, delineated as follows:

**(7)** Excellent | **(6)** Very Good | **(5)** Good | **(4)** Satisfactory | **(3)** Mediocre | **(2)** Poor | **(1)** Very Poor | **(N)** No Grade  
It also provides a comparison of Signature student performance with performance world-wide in the May 2010 session. This table includes the scores of both full diploma candidates and certificate candidates.

Subject	Candidates	Score							World Mean	Signature Mean
		7	6	5	4	3	2	1		
English A1 HL	40	1	15	23	1	0	0	0	4.7	5.40
French B SL	16	0	6	2	3	3	2	0	4.7	4.44
German B SL	3	0	0	1	1	1	0	0	5.1	4.00
Spanish B SL	22	0	5	7	9	1	0	0	4.9	4.73
History Europe/ME HL	23	0	0	10	10	3	0	0	4.6	4.30
History SL	20	0	4	9	5	1	1	0	4.6	4.70
Biology HL	39	0	0	10	20	9	0	0	4.4	4.03
Chemistry SL	19	2	5	6	4	2	0	0	4.1	5.05
Computer Science SL	12	1	3	4	3	0	1	0	4.9	4.92
Math HL	21	0	0	6	4	10	1	0	4.3	3.71
Math SL	27	0	0	3	11	12	1	0	4.4	3.59
Math Studies SL	20	1	3	14	2	0	0	0	4.7	5.15
Music HL	1	0	0	1	0	0	0	0	4.5	5.00
Music Creating SL	2	0	0	0	2	0	0	0	4.0	4.00
Music Group Perf SL	1	0	0	0	1	0	0	0	4.5	4.00
Music Solo Perf SL	5	0	2	1	2	0	0	0	4.4	5.00
Visual Art SL-A	10	7	2	0	1	0	0	0	4.5	6.50

### Percentage of Exams Scoring 4 or Higher

This chart shows the percentage of exams scoring 4 or higher from 2008-2011. A score of 4 is generally considered "passing" by some evaluators. However, some universities accept a 3 for advanced placement credit.



### Comparative Assessment AP/IB

The table below gives a more detailed analysis of Signature student performance as compared to that of students across Indiana and the nation. The table gives details of the score distribution and also shows the percentage of Signature students enrolled in AP or IB classes who either take those tests or earn bridge credit.

Exam/Course	# Enrolled	# AP Tests	% Tested AP	# IB Tests	% Tested IB	% Not Tested	Score					Mean	IN Mean	Ntl. Mean
							5	4	3	2	1			
Biology	46	43	93	39	85	0	4	10	13	7	10	2.80	2.31	2.85
	55	1	2	NA	NA	NA								
IB Bio HL1 (*0)														
Calc AB/IB Math HL1 & SL2	23	14	61	13	57	0	1	3	2	0	8	2.21	2.26	2.82
Calculus BC/IB Math HL1 & HL2	45	25	56	21	47	0	6	4	9	1	5	3.20	3.47	3.77
Comp Sci/IB Comp Sci SL	14	5	36	12	86	7	0	1	1	1	2	2.20	3.32	3.10
Chemistry/IB Chem SL1 & SL2	40	26	65	19	48	0	7	1	9	5	4	3.08	2.10	2.77
Eng Lit: Combined		78			NA	NA	6	18	30	24	0	3.07	2.62	2.81
Eng Lit: Gregg	40	6 Lit/2 Lang	20	40	100	0	6	9	14	6	0	3.43	2.62	2.81
	40	29 Lit/9 Lang	87	NA	NA	13								
IB Eng HL1														
Eng Lit: Sarol	21	20 Lit/2 Lang	95	0	0	5	0	9	16	18	0	2.79	2.62	2.81
	24	23 Lit/6 Lang	96	NA	NA	4								
IB Eng HL1														
Eng Lang: Combined		98			NA	NA	7	33	40	22	5	3.05	2.83	2.92
Eng Lang: Gregg	40	2 Lang/6 Lit	20	40	100	0	0	3	6	2	0	3.09	2.83	2.92
	40	9 Lang/29 Lit	87	NA	100	13								
IB Eng HL1														
Eng Lang: Sarol	21	2 Lang/20 Lit	95	0	0	5	1	1	3	3	0	3.00	2.83	2.92
	24	6 Lang/23 Lit	96	NA	NA	4								
IB Eng HL1														
AP Lang-10th grade	24	23	100	NA	NA	4	3	5	10	5	0	3.26	2.83	2.92
Eng Lang: Atkinson-10th grade	55	55	100	NA	NA	NA	5	9	22	17	2	2.96	2.83	2.92
Env Sci	37	36	97	NA	NA	NA	4	20	6	4	2	3.56	2.18	2.66
Eur Hist/IB Hist HL1	32	21	66	NA	NA	44	4	2	10	3	2	3.14	2.77	2.8
Gov Comp/IB Hist HL & SL	61	13	21	43	70	18	0	2	2	5	4	2.15	2.56	2.98
Gov US	49	49	100	NA	NA	0	9	11	13	11	4	3.16	2.26	2.66
Music Theory	6	5	83	NA	NA	17	0	2	0	3	0	2.80	2.91	2.97
Physics B	13	13	100	NA	NA	NA	4	4	4	1	0	3.85	2.43	2.92
Physics C: Electricity & Magnetism	0	1	undef	NA	NA	NA	0	0	0	0	1	1.00	3.27	3.47
Physics C: Mechanics	0	1	undef	NA	NA	NA	0	0	1	0	0	3.00	3.06	3.38
Statistics	3	3	100	NA	NA	0	0	3	0	0	0	4.00	2.43	2.81
French Language/IB French SL1	0	2	undef	NA	NA	NA	0	0	0	1	1	1.50	2.84	2.78
Spanish Lang/IB Spanish SL	25	5	25	24	96	4	0	1	1	0	3	2.00	2.57	3.23
Studio Art-Drw/IB Art SL1	5	3	60	NA	NA	40	0	0	2	1	0	2.67	3.29	3.08
Studio Art -2D Design/IB Art SL1	10	6	60	NA	NA	40	0	1	1	4	0	2.50	2.99	3.17
World History	83	76	92	NA	NA	8	10	11	24	21	10	2.87	2.59	2.57
No AP/IB Math Studies SL	24	NA	NA	20	83	17								
No AP/IB Math SL	16	NA	NA	16	100	0								
No AP/IB Music HL2 & SL2	9	NA	NA	9	100	0								
No AP/IB Art SL2	10	NA	NA	10	100	0								
No AP/IB French SL2	18	NA	NA	16	89	11								
No AP/IB German SL	4	NA	NA	3	75	25								

\*Number required to take the exam to satisfy external assessment requirements \*\*Indiana and national means are 2010 data, the latest available

## Student Demographics

### Statistical Analysis of Student Composition

Male	40%
Female	60%
White/Non-Hispanics	76%
African American	4%
Asian American	12%
Hispanic	3%
Multi-racial	5%
Free & Reduced Texts	9.9%
Attendance Rate	96%
Drop Out Rate	0%

### Suspensions/Expulsions

Suspensions	4
Expulsions	0

### Official Enrollment (ADM): 326 Students

Grade 9	115
Grade 10	83
Grade 11	67
Grade 12	61
German Exchange Students	5

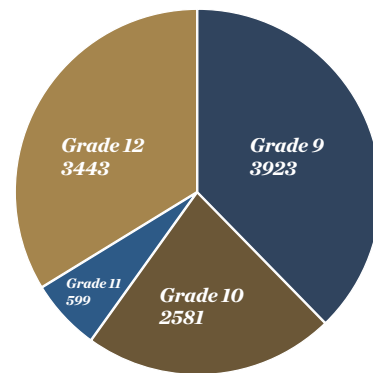
### Discontinued Attendance: 39 Students

transferred out of country (foreign exchange)	1
transferred out of state	2
transferred to other Indiana schools	33
returned to home schooling	1
expulsions	0



## Community Service

Reflecting the Signature commitment to community service, Signature students completed 10,546 hours of community service during the school year. Each year students are required to complete a total of 20 service hours for the community and 5 service hours for the school totaling 100 hours of service in their four years at Signature School.



\* Grade 11 hours reflect non-IB students only. Grade 12 hours include 38 IB full diploma candidates' junior hours as well.

## Special Education

Signature School served three students with Individual Educational Plans (IEP). Seven students were provided additional accommodations in the classrooms in accordance with Part 504 of the Rehabilitation Act of 1973.

Signature School abides by the federal Individuals with Disabilities in Education Act (IDEA), the Americans with Disabilities in Education Act of 1990, Part 504 of the Rehabilitation Act of 1973, and regulations implementing these mandates, including the requirements in Article 7 concerning evaluation, re-evaluation, and education of students in the least restrictive environment, and due process and reporting requirements.

## Graduate Profile

Total Grant & Scholarship Dollars Offered (2011)	\$7.97 million
Total number of Signature seniors	61
Class of 2011 graduation rate	100%
Four-year on-time high school completion rate	100%
Academic Honors Diplomas	55 (90%)
Core 40 Diplomas	6 (10%)

## Major Scholarships Acceptance

Ball State Presidential Scholarship	\$12,000
Ball State 21st Century Scholarship	\$34,176
Bellarmino Monsignor Treece Scholarship	\$36,000
Butler Presidential Scholarship	\$60,000
Embry Riddle Scholarship	\$12,000
ETFUCU Ted Hitch Scholarship	\$2,000
	\$2,000
Indiana University Hudson & Holland Scholarship	\$20,000
Indiana University Excellence Scholarship	\$36,000
Indiana University Prestige Scholarship	\$16,000
Lee University Presidential Scholarship	\$12,160
Loyola Presidential Scholarship	\$64,000
Missouri U. of Science & Tech Excellence Scholarship	\$18,000
Missouri U. of Sci. & Tech Midwest Student Exchange Schol.	8,000
Missouri U. of Sci. & Tech Miner Alumni Scholarship	\$5,000
Missouri University of Sci. & Tech ST Scholarship	\$4,000
Missouri University of Sci. & Tech Dean's Scholarship	\$3,000
Missouri U. of Sci. & Tech National Merit Scholarship	\$4,000
Missouri U. of Sci. & Tech Lois Highfill Psychology Schol.	\$4,000
Purdue University Presidential Scholarship	\$32,000
Purdue University Marquis Scholarship	\$8,000
Purdue University School of Agriculture Scholarship	\$5,600
Purdue University Presidential Scholarship	\$16,000
Richard Lugar Minority Scholarship	\$4,000
Rose Hulman Merit Scholarship	\$68,000
Rose Hulman Carl & Mildred Carlson Scholarship	\$4,000
Sam Walton Community Scholarship	\$3,000
School of Art Institute of Chicago Scholarship	\$22,000
University of Evansville Davidson Scholarship	\$4,400
UE First Choice Achievers Award	\$117,664
UE William L. Ridgway Scholarship	\$72,000
UE Dean's Scholarship	\$76,000
UE Pott Foundation Scholarship	\$3,000
University of Nebraska Ruth Leverton Scholarship	\$35,800
University of Southern Indiana Departmental Scholarship	\$16,000
	\$5,600
	\$4,400
Wabash College Presidential Scholarship	\$30,000
Washington University National Merit Scholarship	\$8,000
Webster University Academic Merit Scholarship	\$44,000

## Graduate Recognition

### Signature School

#### Outstanding Senior Award

James Hitchcock was selected by the Signature teachers to receive the Outstanding Senior Award. This is awarded to a student who has excelled academically, demonstrated leadership, performed community service, and is respected by their teachers and peers.

#### Signature Spirit Award

Mallory Foster was selected by the Signature teachers to receive the Signature Spirit Award. This is awarded to a student who best represents the ideals of the "Signature Way".

#### Ted Kuhlenschmidt Service Award

E. B. Mumford was chosen to receive this honor. This award is given to a student who has demonstrated devotion to his or her education at Signature School, has excelled in the areas of service, leadership, and involvement, and has played an important role in maintaining the character and reputation of Signature School.



## National

### AP Scholar

- 82 Signature students earned the designation of AP Scholar by the College Board in recognition of their exceptional achievement on the college-level Advanced Placement Program® (AP®) Exams.
- National AP Scholar Award (granted to students in the United States who receive an average score of at least 4 on all AP exams taken, and scores of 4 or higher on eight or more of these exams) Rachel Erkilla, Andrew Layer, Donald MacLeod, Daniel Nasiatka, Caleb Rouleau, Samyuth Subramanian
- AP Scholar with Distinction Award (granted to students who receive an average score of at least 3.5 on all AP exams taken, and scores of 3 or higher on five or more of these exams) Jarrod Bouchie, Breanna Caldwell, Blake Davenport, Neel Erickson, Rachel Erkilla, Victoria Foster, Claire Fox, Denton Greenfield, Caitlin Hochuli, Kianna Jackson, Sylvia Jang, Sarah Joest, Christina Krawec, Andrew Layer, Donald MacLeod, Richard McCool, Daniel Nasiatka, Kaleen O'Connell, Christopher Pratt, Kayla Robinson, Caleb Rouleau, Laura Russelburg, Trevor Smith, Kane Stratman, Samyuth Subramanian, Kevin Thomas, Bailey Trela, Hannah Trout, Dustin Waldroup, Katherine Ward, Sierra Wilson
- AP Scholar with Honor (granted to students who receive an average score of at least 3.25 on all AP exams taken, and scores of 3 or higher on four or more of these exams) Lindsee Culbertson, Nicholas Ebertz, Caroline Ellert, Noah Eppler, Kelsey Erwin, Kainan Kawamura, Guanchen Liu, Eugene B. Mumford, Megan Parker, Jacob Todd, Megan Weinzapfel, Cassandra Wells

- AP Scholars (granted to students who receive scores of 3 or higher on three or more AP exams) Alyson Adams, Romaze Akram, Grace Bush, Victor Chavez, Victoria Curtis, Ashley Davis, Baylor Dowdy, Shaan Erickson, John Faver, Mallory Foster, Alex Junge, Janette Belle Junge, Nicholas Klitzing, Taylor Logan, Stephanie Milan, Mihret Moges, Courtney Mullen, Ryan Murphy, Cody Myers, Seetharam Narra, Juliana Pajdo, Connor Perry, Paige Reisinger, Spencer Rice, Salia Richardt, Lawson Roth, Noah Rouleau, Jonathon Rusche, Ivan Schaffer, Samantha Shue, Matthew Shepard, Lindsay Smith, Benjamin Steele, Madison Stoddard, Cecil Sullivan, Stephen Weiler, Cassandra White, Jacoba White, Erica Wirthman

**National Merit Finalist Award**  
Five students qualified as National Merit Finalists: Evan Brizius, Neel Erickson, James Hitchcock, Kaleen O'Connell, Caleb Rouleau

**Commended Students in the 2011 National Merit Program**  
Rachel Erkilla, Christopher Pratt

**2010-2011 National Hispanic Recognition Program Scholars**  
Christina Krawec

**United States Senate Youth Program**  
James Hitchcock was selected to serve as one of the two student delegates from Indiana to participate in the 49th annual program held in Washington, D.C. Students spent a week in Washington experiencing their national government in action. They heard major policy addresses by Senators, cabinet members, officials from the Department of State and Defense and directors of other federal agencies.

## State

**Indiana Legislative Youth Advisory Council**  
House Minority Leader Brian Bosma appointed James Hitchcock to serve on the Indiana Legislative Youth Advisory Council. The Council's purpose is to advise and make legislative recommendations to the Indiana General Assembly concerning matters directly affecting the State's youth.

### Signature School Speech Team Won First in State in Division A

- Memorized Duo: Huy Pham & Romaze Akram
  - Scripted Duo: Chyna Cheaney & Ali Renschler, Ciara Doll & Olivia Schaperjohn, Noah Eppler & Kyle Scheller
  - Broadcasting: Chris Pratt, (6th place)
  - Prose: Anne Ellert, Ali Renschler, Kayli Russell, Hannah Trout
  - Impromptu: Ariel Happe, Ben Steele
  - Domestic Extemp: Andrew Ireland, Samyuth Subramanian, Bailey Trela
  - International Extemp: Cameron McCool, Ben Steele, Katie Ward (5th place)
  - Discussion: Mina Mufti
  - Poetry: Huy Pham\*, Kianna Jackson
  - Humorous Interp: Christine Kim, Greta Smith
  - Dramatic Interp: Kayli Russell, Greta Smith
  - Original Performance: Megan Parker, Spencer Rice
  - Original Oratory: Katie Ward, Bailey Trela
- \* Qualified for Naionals

## Local

**48th Annual High School Art Show**

- Claire Fox first place in painting and the John W. Streetman Best of Show Award with her oil painting, "Cutty Sark"
- Dellon Pekar received the Jim Goodridge Memorial Merit Award for his work, *Into The Ocean*, Torn Paper

## Advanced Placement

**Russ Luecke**  
French Language, Butler University, Indianapolis, Indiana

**Joe Nelson**  
Economics, Butler University, Indianapolis, Indiana

## Counseling

- **Ann Gomoll-Doan**  
Indiana Association for College Admission Counseling, Indianapolis, Indiana
- Washington University Counselor Conference, St. Louis, Missouri
- University of Miami Counselor Conference, Miami, Florida

## Education

**Ann Gomoll-Doan, Vicki Snyder**  
College Board National Forum, Washington, D.C

**Suzanne Dodd, Ann Gomoll**  
LRP's National Institute on Legal Issues of Education Individuals with Disabilities, Phoenix, Arizona

**Attilia Gogel**  
• The Foreign Policy Research Institute - Wachmen Center. Participant in the History Institute for Teachers, chaired by Pulitzer Prize winning historian Walter McDougall and David Eisenhower, a week-long conference to study civilian control of the military. The conference featured lectures by the nation's leading scholars.

- Advanced College Project training, Indiana University, Bloomington, Indiana

**Shannon Hughes**  
Indianapolis Star Award Ceremony, Indianapolis, Indiana

**Vicki Snyder**  
National Alliance for Public Charter Schools Conference, Washington, D.C.

## International Baccalaureate

**Julia Gregg**  
Higher Level English Language & Literature, Level 2, Vancouver, BC Canada

**Shannon Hughes**  
Higher Level Mathematics, Level 2, Atlanta, Georgia

**Corrie Sarol**  
Higher Level English Language & Literature, Level 2, Vancouver, BC Canada

## School Safety

**Jeff Hara**  
Indiana School Safety Specialist Association training, Indianapolis, Indiana

## Science

**Kendra Winchester**  
Introduction to DNA Profiling and Forensic Anthropology SwISTEM Workshop, University of Southern Indiana, Evansville, Indiana





National \_\_\_\_\_

**Signature School Ranked #8 by The Washington Post (2011)**

Since 1998, The Post's Jay Mathews has ranked Washington-area public high schools using the Challenge Index, his measure of how effectively a school prepares its students for college. In 2011, the Post expanded its research to high schools across the United States. The formula for the rankings is: Divide the number of Advanced Placement, International Baccalaureate or other college-level tests a school gave in 2010 by the number of graduating seniors. Equity & Excellence (E & E) is the percent of all seniors who had at least one passing grade on an AP or IB exam. Signature's E and E% was 100%.

**Signature School Ranked #1 in the Midwest by The Washington Post (2011)**

**Signature School Ranked #3 Among the Nation's Charters Schools by The Washington Post (2011)**

**Signature School Ranked #7 by Newsweek magazine (2011)**  
Newsweek magazine ranked Signature School number 7 among the top 100 public high schools in the nation. Equity & Excellence (E and E %) is the portion of all graduating seniors at a school that had at least one passing grade on one AP or IB test. Signature's E and E% was 100%.

State \_\_\_\_\_

**AP Access & Success (2011)**

This award is based on the graduating class of 2010 taking and passing an AP exam during high school (earning a score of 3 or higher on 1-5 scale for at least one exam). Signature ranked 1st in state with an 88% pass rate.

**Four Star Award 2010**

The Four Star Award is a prestigious award which recognizes Signature School for having demonstrated Adequate Yearly Progress (under No Child Left Behind), having performed in the top 25% of all schools in the state in four areas: attendance rate, language arts proficiency score, mathematics proficiency score and percentage of students meeting state standards in both English/language arts and mathematics.

**Adequate Yearly Progress**

Signature School was designated as having made Adequate Yearly Progress under No Child Left Behind (NCLB). Under NCLB, schools must meet annual goals in the academic achievement of the overall student population. Schools are designated as having made Annual Yearly Progress (AYP) by calculating student achievement and participation rates on the Indiana Statewide Testing for Educational Progress-Plus (ISTEP+) in English/language arts and mathematics; student attendance rates for elementary and middle schools; and high school graduation rates for high schools.

**Signature Categorized as Exemplary**

Under Indiana Public Law 221, (Indiana's accountability system for K-12 education), Indiana school corporations and schools are placed into one of five categories based upon "improvement" and "performance" data from the Indiana Statewide Testing for Educational Progress-Plus (ISTEP+). The P.L. 221 categories are: exemplary progress, commendable progress, academic progress, academic watch (priority), academic probation (high priority).

July 1, 2011 to June 30, 2011

Revenues	
General Fund	\$2,075,642
Stimulus Grants Fund	10,173
Grants Fund	324,538
<b>Total</b>	<b>\$2,410,353</b>

Expenditures	
General Fund	\$2,125,488
Stimulus Grants Fund	11,264
Grants Fund	324,934
<b>Total</b>	<b>\$2,461,686</b>

There was no repayment during the 2010-11 academic year on the Common School Fund Charter School Advancement Loan. In 2009, the Signature School chose to accept the option provided by the State of Indiana to defer loan payments from July 1, 2009, through January 1, 2011 for two years.

In the 2010-2011 academic school year, Signature School received a total of \$1,893,206 for tuition from the Indiana Department of Education. Signature also receives several smaller, restrictive, federal grants distributed by the state such as Special Education, Title I, and Title II. The Signature School was not awarded any new stimulus grants during the 2010-2011 school year, but did receive the remaining balance of the 2009-10 awarded one-time stimulus grants in the amount of \$10,173. Both regular and stimulus grants are used in various ways at the school as directed in each grant application, including expenditures for special education consulting, technology projects and professional development. Also received in the 2010-11 fiscal year were both the 2009-10 and 2010-11 Charter School Facilities Grants for \$115,140 and \$110,500, respectively. The Charter School Facilities Grant was a new grant offered in the 2009-10 school year; in the past, facilities funding has been one of several types of funding for which charter schools have not received assistance while non-charter public schools have. Charter Schools must annually apply for this grant and the grant's funding is set to expire after the 2013-14 fiscal year.

Signature School is a public school open to all students and does not charge tuition. It is funded like other Indiana high schools except that Signature receives substantially less funding than traditional high schools.



## SIGNATURE STAFF

### Math/Science \_\_\_\_\_

**Cynthia Ahmed, M.S.**  
University of Southern Indiana

**Jeff S. Hara**  
M.S., University of Southern Indiana

**Tracey Hayden**  
B.S., University of Southern Indiana

**Shannon Hughes**  
M.A., University of Southern Indiana

**Michele Klipsch**  
B.S., University of Southern Indiana

**Eric Reek**  
M.S., Purdue University

**Shane Thread**  
M.A., Oakland City University

**Kendra Winchester \***  
M.S., University of Southern Indiana

### Humanities \_\_\_\_\_

**Erin Atkinson**  
M. A., Oakland City University

**Jamia Dixon**  
M.A., University of Evansville

**Theresa Doyle**  
M.A., University of Evansville

**Attilia Landini Gogel**  
M.A., University of Southern Indiana

**Julia Gregg**  
M.S., Peabody College (*Vanderbilt University*)

**Jean Hitchcock**  
M.A., Middlebury College

**Russell Luecke**  
B.A., University of Southern Indiana

**Joe Nelson**  
B.S., University of Southern Indiana

**Janet Pareja**  
B.A., Miami University

**Karla Razor**  
M.A., Indiana State University  
(*Candidate for Doctorate Degree*)

**Carrie Schmitt**  
B.A., University of Southern Indiana

**Corrie Sarol**  
B.A., Iowa State University

**Amy Scharf**  
M.A., Pepperdine University

**Rita Crane \***  
M.A., University of Evansville

### Fine Arts \_\_\_\_\_

**Terry W. Becker**  
M.S., University of Evansville

**Clinton Bosler**  
B.S., University of Southern Indiana

**Linda Goodridge**  
M.A., University of Evansville

**Rebecca Simpkins \***  
University of Evansville

### Special Education \_\_\_\_\_

**Suzanne Dodd**  
M.A., University of Evansville

**Nancy McKinney \***  
M.Ed., Indiana Wesleyan University

### Admin/Support \_\_\_\_\_

**Vicki Snyder**  
*Executive Director/Principal*  
M.A., University of Evansville

**Phyllis Pate**  
*Administrative Assistant*

**Ann Gomoll-Doan**  
*Counselor*  
M. Ed., Indiana State University

**Mary Williams**  
*Counselor's Secretary*  
B.A., University of Evansville

**Jean Denton Brubeck,**  
*Director of Development,*  
M. S., University of Michigan

*\* Part Time*



## HISTORY

Signature School, Indiana's first charter high school in 2002, was organized through the support and direction of the Signature Learning Center which later became the Signature School Foundation, Inc. In December 2001, Ms. Snyder, our current principal, with a group of teachers submitted a charter seeking conversion status to the Evansville Vanderburgh School Board of Trustees (EVSC). On February 25, 2002, the EVSC approved the charter.

Signature's unique downtown location gives students an independent high school experience. It provides students with easy access to resources and

expertise. The school's proximity to the Evansville Civic Center, financial and business institutions, museums, libraries and other community organizations enhances educational opportunities for students. Over the years, the school has become an integral part of the downtown community. The campus has grown to include the Performing Arts Studio and additional classroom, both located in the Victory and the Robert L. Koch II Science Center, completed in 2006.

A public high school, Signature School provides choice to students and parents in Evansville and Southwestern Indiana.

Signature School's curriculum is internationally based with emphasis on fine and performing arts, science, technology, mathematics, and the liberal arts. All Signature courses are written to comply with the Indiana Academic Standards for the appropriate grade level and discipline. External assessment is provided to all students through the Advanced Placement program and the International Baccalaureate Diploma Programme, implemented in 2006. Signature continues to revise and improve its curriculum to meet the demands of the community for a secondary educational opportunity that puts academics first.

## Thank You

Signature School's major donors who made gifts of \$20,000 or more are listed, beginning with 2002 through 2011. Our thanks to all of these donors who so believed in the mission of Signature School that they made significant financial commitments to ensure Signature's success.

There are others to thank as well – our Signature parents and community friends. Collectively, they generously have supported the Signature School Parent Campaign, and a number of our special event fund raisers, such as the annual Terry Becker & Friends event, the Metropolitan Evening of Music instrumental music event, and the new Tablescapes event.

To address the financial challenges resulting from Indiana's most recent budget reductions to all schools, and also to respond to the results of a comprehensive strategic planning process, we have put into place for 2011- 2012 very aggressive plans to ensure Signature's continued financial stability and success that include:

\*Securing major three year financial commitments from private entities to offset the significant reduction in State funding;

\*Initiating an Annual Fund Campaign to appeal to former donors and potential friends of Signature;

\*Initiating an Alumni Fund Campaign; and

\*Continuing our efforts to seek potential grant possibilities from individual and corporate foundations.

Thanks to our very generous donors, and our new initiatives, I am confident that Signature will be in a position to not only sustain its success, but its status as one of the best public high schools in the country!

### Jean Denton Brubeck

*Director of Development*

## Board of Directors

**Mr. Robert L. Koch II** *President*

**Mr. Edmund Hafer** *Vice President*

**Mrs. Theresa Chavez**

**Mr. Jeff Hara**

**Ms. Vicki Snyder**

**Mr. David Wagner**

**Mr. John Whinrey** *Secretary*

**Dr. Sharon Kazee**

### Sustaining Foundation Donors

The Signature model is successful because it is a merger of the best in education and the best in business and community leaders. Through the input and support of the corporations, companies, and individuals listed below, we have been able to provide access to extraordinary educational opportunities for the students of Southwestern Indiana.

### American General Financial Services

### Casino Aztar

### Crescent-Cresline-Wabash Plastics Foundation, Inc.

### The Eykamp Family

### Fifth Third Foundation

### Edward P. & Mary Anne M. Fox

### Hafer Associates

### Industrial Contractors, Inc.

### Integra Bank Corporation

### Robert & Marguerite Kent

### Koch Foundation

### Mead Johnson Nutritionals

### Old National Bank

### Robert & Elaine Pott Foundation

### John C. & Diane M. Schroeder

### Richard & Patrice Schroeder

### Dallas B. Suhrheinrich

### Toyota Motor Manufacturing of Indiana, Inc.

### Jeffrey N. & Nancy A. Trockman

### United Leasing, Inc.

### Vectren Foundation, Inc.

### John B. & Mona B. Whinrey

*(Donors have made gifts of \$20,000 or more from 2002 - 2011.)*



## College Acceptances

Ball State University \* • Barry University • Bellarmine University \* • Belmont University • Bradley University • Bryn Athyn College • Butler University \* • Centre College • Colgate University • College of Charleston \* • College of William & Mary • Colorado School of Mines • Columbia College Chicago \* • Cornell College • Davidson College • Denison University \* • DePaul University • DePauw University • Earlham College • Eastern Michigan University • Eckerd College • Elmhurst College • Embry-Riddle Aeronautical University \* • Franklin College • George Mason University • Georgia Institute of Technology • Hamilton College • Hanover College • Indiana Tech University • Indiana University \* • Indiana University/Purdue University Indianapolis • Indiana State University \* • Kenyon College • Kettering University • Lawrence University • Lee University \* • Loyola University Chicago \* • Macalester College • Marquette University • McGill University Montreal • Meredith College • Miami University Ohio • Middlebury College • Missouri University of Science & Technology \* • Murray State University • New York University • North Carolina State University • Northwestern University \* • Olivet Nazarene University • Oral Roberts University • Pratt Institute • Princeton University • Purdue University \* • Rice University • Robert Morris University • Rollins College • Roosevelt University • Rose Hulman Institute of Technology \* • Saint Louis University • School of the Art Institute of Chicago \* • Southern Methodist University \* • Stanford University \* • Taylor University • Texas Christian University • The King's College • The Ohio State University • Trinity University • University of Evansville \* • University of Illinois Chicago • University of Indianapolis • University of Kentucky \* • University of Louisville • University of Michigan • University of Nebraska \* • University of Notre Dame \* • University of Southern Indiana \* • University of Tennessee • University of Texas Austin • University of Texas Dallas • University of Virginia • Vanderbilt University • Vincennes University • Wabash College \* • Washington University \* • Washington & Lee University • Webster University \* • Western Kentucky University • Williams College \* • Xavier University

\*indicates institutions students will be attending

The mission of the Signature School is to meet the needs of self-motivated learners in a progressive environment driven by global concerns. We emphasize rigor and excellence in academics, the arts, integrated technologies, and community service.

[www.signature.edu](http://www.signature.edu)